

**Model : PG64**

64mm Dial Glycerine filled Pressure Gauge

Dual Scale 0-1000 Bar (0-15000psi),  
1/4" NPT Bottom Connection.



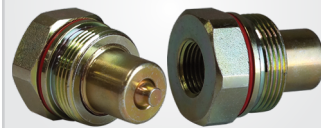
**Model : FC382**

Female Coupler with 3/8" NPT Male.



**Model : MC382**

Male Coupler with 3/8" NPT Female thread



**Model : PG100**

100mm Dial Glycerine filled Pressure Gauge



Dual Scale 0-1000 Bar (0-15000psi)  
1/2" NPT Bottom Connection.

**Model : GA7001**

Gauge Adapter for 1/4" NPT Pressure Gauge (Model:PG64)



**Model : GA7002**

Gauge Adapter for 1/2" NPT Pressure Gauge (Model:PG100)

**Model : LT38**

T-Connector with one 3/8NPT Female Inlet Port and 2 nos. of 3/8" NPT Female Outlet Ports.



**Model : LF38**

Male adapter with both end 3/8" NPT Male Thread.



**Model : HS2**

1.8 Mtr Long Hose Assembly with One End Male Coupler and Other end with 3/8" NPT Male Thread.

Order codes for different lengths

- 3 Mtr - Model: HS3
- 5 Mtr - Model: HS5
- 10 Mtr - Model: HS10



**Model : MF4**

Manifold with 4 Outlet Ports 10000Psi(700 Bar)



Order codes with more ports  
5 Port - MF5  
6 Port - MF6

**Model : HSC2**

1.8 Mtr Long Hose Assembly with both End Male Coupler.

Order codes for different lengths

- 3 Mtr - Model: HSC3
- 5 Mtr - Model: HSC5
- 10 Mtr - Model: HSC10



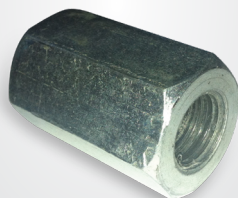
**Model : MF4-NV**

Manifold with needle Control valve-4 Outlet Ports 3/8" NPT, working pressure 10000Psi(700 Bar)



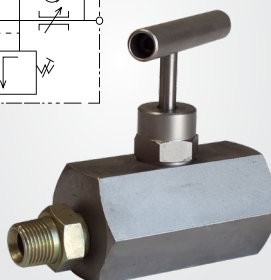
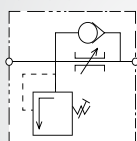
**Model : LS38**

3/8" NPT female X 3/8" NPT female adapter



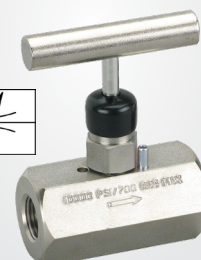
**Model : LV66**

Load holding valve 3/8" NPT male X 3/8" NPT female



**Model : NV38**

Needle Valve, 10000 Psi working pressure with 3/8" NPT Female Threading on both End.



**Model : LF1438**

1/4" Male x 3/8" Female Adapter

